



EDUCATOR'S HEARTBEAT

volume 13 Issue 5 May 2009

www.efdlrs.net/heartland

The FDLRS Heartland Associate Center serves Exceptional Student Education in DeSoto, Glades, Hendry, and Highlands Counties

ANNOUNCING

OUR DISTRICT'S TEACHERS OF THE YEAR!!



FDLRS Heartland would like to congratulate all the contenders in DeSoto, Glades, Hendry and Highlands County's schools who were nominated for their district teacher of the year award. With so many good teachers in our four county area we know it is a hard choice to choose just one each year. This year, the district winners were as follows:

DESOTO COUNTY SCHOOLS: **Mr. James Wildt** was recognized as District Teacher of the year for DeSoto County. He is a social studies teacher for grades 9-12 at DeSoto High School.

GLADES COUNTY SCHOOLS: **Mrs. Laura Ahern** was recognized as District Teacher of the year for Glades County. She is a reading teacher for grades 7-8 at Moore Haven Jr/Sr High School.

HENDRY COUNTY SCHOOLS: **Ms. Rosa Perez** was recognized as District Teacher of the year for Hendry County. She is a reading coach for all grades at Eastside Elementary School.

HIGHLANDS COUNTY SCHOOLS: **Ms. Julie Poucher** was recognized as District Teacher of the year for Highlands County. She is a H.A.R.R.T. teacher for grades 3-4 at Park Elementary School.

CONGRATULATIONS TO EACH OF THESE RECEIPIENTS FOR A JOB WELL DONE!!

The FDLRS Heartland Associate Center serves Exceptional Student Education in DeSoto, Glades, Hendry, and Highlands Counties For more information on services offered by FDLRS Heartland please visit our website:
[@ efdlrs.net/heartland](http://www.efdlrs.net/heartland)

NON-INSTRUCTIONAL EMPLOYEE OF THE YEAR

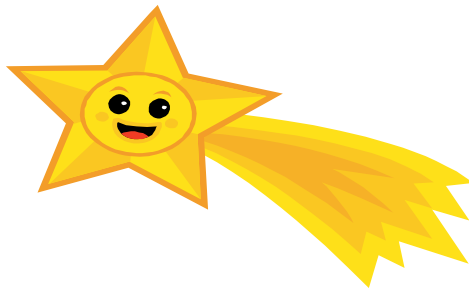
Each year a non-instructional staff member for the districts in Florida is chosen as the Non-Instructional Employee of the year. This year is no different. Our four county service area has announced their winners for the 2008-09 school year and we want to give them the recognition they deserve.

DESOTO COUNTY: **Ms. Shannon Arthur** was recognized as DeSoto County's non-instructional employee. She is the secretary to the principal at DeSoto Middle School.

GLADES COUNTY: **Ms. Marguerita Maldonado** was recognized as Glades County's non-instructional employee. She is part of the custodial staff at West Glades School.

HENDRY COUNTY: **Ms. Erlinda Brown** was recognized as Hendry County's non-instructional employee. She is a paraprofessional for all grades at Eastside Elementary School.

HIGHLANDS COUNTY: **Ms. Doreen Pearlman** was recognized as Highlands County's non-instructional employee. She is a paraprofessional for all grades at Park Elementary School.



CONGRATULATIONS TO EACH OF YOU WINNERS.....YOU ARE STARS !!

The FDLRS Heartland Associate Center serves Exceptional Student Education in DeSoto, Glades, Hendry, and Highlands Counties. For more information on services offered by FDLRS Heartland please visit our website:

@ efdlrs.net/heartland



11th Family Café Conference Registration –

Registration for the 11th Annual Family Café Conference is posted on the Family Café web site. You may also register by completing the registration form and faxing it to their office at (850) 224-4674 or by mailing it to The Family Café, 1332 N. Duval St., Tallahassee, FL 32303. The conference will take place June 5-7, 2009, at the Disney Coronado Springs Resort. The registration brochure is available now on their Web site.

- Contact: www.familycafe.net or (850) 224-4760



The USF College of Education has many courses to meet your educational needs. Whether you are looking to earn certification credits, work towards a master's degree, renew certification or just brush up on your skills, we have a course that is right for you. For a brochure featuring a sampling of courses that will help you sharpen your skills and your career, click below!

Website: <http://www.coedu.usf.edu/main/sas/gradinfo.html>

US Office of Disability Employment Policy Releases New Fact Sheets



ODEP has released three new fact sheets that provide disability employment information for parents, youth and employers:

Creating a Path to Employment: Tips for Parents with Children with Disabilities

http://www.dol.gov/odep/documents/creating_path_to_Employment.pdf

Essential Skills to Getting a Job: What Young People with Disabilities Need to Know

http://www.dol.gov/odep/documents/essential_job_skills.pdf

Shaping Tomorrow's Workforce: Including Talents of Young People with Disabilities

http://www.dol.gov/odep/documents/shaping_tomorrows_workforce.pdf

The FDLRS Heartland Associate Center serves Exceptional Student Education in DeSoto, Glades, Hendry, and Highlands Counties. For more information on services offered by FDLRS Heartland please visit our website:

@ efdlrs.net/heartland



FREE
Gifted Education Class
Required Class for Your Gifted
Endorsement
Special Populations of
Gifted Students



This is a special week long class which will help teachers achieve their gifted endorsement. At the conclusion of this course, participants will be able to demonstrate knowledge of the evolution of gifted education and of the nature and needs of students who are from gifted special populations (*i.e.*: disabled, underachieving, economically disadvantaged, highly gifted and minority populations).

Instruction will take place at the
Heartland Educational Consortium
1080 US Hwy 27 North
Lake Placid, Florida
Monday July 27th –Friday 31 July 2009
8:00AM- 3:30 PM

Internet/Independent Assignments to Complete 60 Hours of Inservice Credit.

Requirements: Classroom attendance daily, Independent Homework and class projects, post test, portfolio.

Appropriate Participants: Teachers of the gifted, Advanced Academics, General Education Teachers K-12, Honors, etc.

Call FDLRS Heartland at **863-531-0435** if you are interested in attending this special week long class.

Registration
Special Populations of Gifted Students
Sponsored by FDLRS Heartland

Class Location
HEC Training Room
1100 US Hwy 27 N
Lake Placid, FL

Monday, July 27th – Friday July 31,2009

Please print name _____

School:_____ County_____ ESE Yes[] No []

Teaching Assignment:_____

Home Address:_____

Primary e-mail:_____

Alternate E-Mail:_____

Home Phone:_____ Work Phone:_____

Email addresses and phone numbers are requested so course instructor can contact you, if needed. Please check [?] above, the best way to contact you.

I will use this course for the following: (Please check only one)

To renew my teaching certificate

To add the Gifted Endorsement to my certificate

To satisfy the in-service hours required as I am teaching out of field

To target an area on my Professional Development Plan

Signature:_____ Date:_____

Fax to FDLRS Heartland at 863 531 0425

The Florida Diagnostic & Learning Resources System is funded by the State of Florida, Department of Education, Division of Public Schools and Community Education, Bureau of Exceptional Student Education and Student Services, through Federal assistance under the Individuals with Disabilities Education Act (IDEA), Part B, IDEA, Part B Preschool and State General Revenue Fun

Child Find Services



www.RecognitionandResponse.org

Provided by the National Center for Learning Disabilities (NCLD) this site provides free information and resources to educators and early childhood practitioners about Recognition & Response system. The system is designed to help teachers and parents respond to signs of learning difficulty in young children as early as possible, (beginning at 3-4 years of age), before they experience failure in school and are referred for formal evaluative services through exceptional student education. Visit this site as there is a lot of information for teachers and parents.

The FDLRS Heartland Associate Center serves Exceptional Student Education in DeSoto, Glades, Hendry, and Highlands Counties For more information on services offered by FDLRS Heartland please visit our website:
@ efdlrs.net/heartland