



# EDUCATOR'S HEARTBEAT

Volume XIV Issue 3 February 2010

[www.efdlrs.net/heartland](http://www.efdlrs.net/heartland)

The FDLRS Heartland Associate Center serves Exceptional Student Education in DeSoto, Glades, Hendry, and Highlands Counties. For more information on services offered by FDLRS Heartland please visit our website

@: [www.efdlrs.net/heartland](http://www.efdlrs.net/heartland)

## *West Glades School Receives Model School Status*

Since 2002, over 500 schools have been trained on Tier 1 PBS (Positive Behavior Support) and the number of schools is growing rapidly due to Florida's increased interest in Response to Intervention. Because of the importance of implementation fidelity, the FLPBS: RtI Project has been recognizing PBS Model Schools since 2005. A PBS Model School is one that has met specific criteria and has demonstrated innovative and effective ways of supporting PBS in their school. Specific characteristics of PBS Model Schools include consistent methods of: (1) utilizing their data to better serve the students and staff, (2) teaching PBS to students throughout the school year, (3) creating engaging reward systems, (4) extending PBS throughout the campus and partnering with the community, and (5) including PBS in daily activities across all available teaching opportunities.

West Glades School began PBS in the 2005-06 school year and has consistently improved their office referral rate since that first year. Under the leadership of Principal Debbie Davis and an excellent school level PBS team, West Glades School has been able to achieve the ranking of model school and proudly displays their banner on campus.

Congratulations West Glades School!! Keep up the good work!

If anyone is interested in starting Positive Behavior Support which lends to establishing best practice in your schools and building your district's capacity for addressing problem behavior through positive behavior supports and response to intervention for behavior, then you should contact Heather Peshak George, Ph.D at [flpbs@fmhi.usf.edu](mailto:flpbs@fmhi.usf.edu) .

### Content

- 1 West Glades Receives Model School Status
- 2 Teachers of The Year Nominees
- 3 SIM
- 4-5 PDA-ESE
- 6 Registration Form
- 7 Recognition and Response
- 8 RtI and Math
- 9 FDLRS Services
- 10 News Flash
- 11 Parent's Conference in Arcadia
12. Don't forget



# ***TEACHER OF THE YEAR NOMINEES***

**FDLRS** Heartland would like to congratulate all the winners of teacher of the year in the DeSoto, Glades, Hendry and Highlands County School Districts. With so many good teachers in these districts it was a hard choice to narrow it down to one per school but the nominees are:

## **DeSoto County:**

MES - *Jeffrey Wildt*  
Nocatee ES - *Ashley Russ*  
WES - *Emily Morris*  
DeSoto MS - *Kaycee Mays*  
DeSoto CHS - *Cynthia Childs*  
DECC - *Jenise Stark*

## **Glades County:**

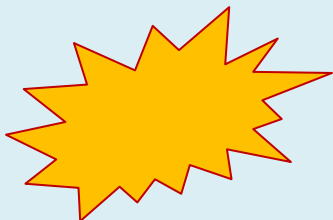
West Glades School - *Ashley Braswell*  
MHES - *Kimberly Tams*  
MHJSH - *Steve Petti*  
Pamayetv Emahakv Charter - *Melody Webber*

## **Hendry County**

LES - *Lynsee Dicks*  
COES - *Suzan Gonser*  
UES - *Robyn Colding*  
LMS - *Karen Johnson*  
LHS - *Pete Dalton*  
CES - *Jaclyn Nara*  
EES - *Sandra Perry*  
WES - *Jill Autrey*  
CMS - *Danielle Jean*  
CHS - *Roberto Sanchez*

## **Highlands County:**

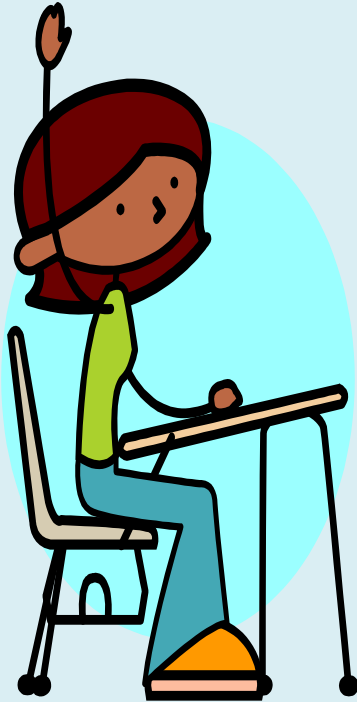
Kindergarten LG - *Noelle Stoll*  
AE - *Pat Roberts*  
CTE - *Sarah Brooker*  
FEW - *Michelle Baxter*  
LGE - *Mary Pat Sheehan*  
LPE - *Misty Matthews*  
ME - *Ashley Culverhouse*  
PE - *Lee Sizemore*  
S'NLE - *Mark Hilburn*  
WE - *Sue Tarter*  
APE - *Ronda Stunkard*  
H-GM - *Charlotte Heston*  
LPM - *Maria Ward*  
SM - *Gayle Johnson*  
APH - *Amy Love*  
LPH - *Joshua Virkler*  
SH - *Brittany Klobuchar*  
District Office - *Brenda Wilcox-Powell*



**CONGRATULATIONS TO EACH OF YOU FOR A JOB WELL DONE!!!**

## WHAT IS THE STRATEGIC INSTRUCTION MODEL (SIM)?

---



The Strategic Instruction Model (SIM) is a comprehensive approach to teaching adolescents who struggle with becoming good readers, writers, and learners. It is based on the reality that to meet high standards, adolescents must be able to read and understand large volumes of complex, difficult reading materials. Additionally, they must acquire the skills to express themselves effectively in writing.

If you are interested in learning more about what can be offered through SIM training, go to [www.kucrl.org](http://www.kucrl.org). Once there click on the “About” link on the top of the page and then click on “For the Press” on the left side of the page. Detailed information on the SIM description, Learning Strategies Curriculum offerings and Content Enhancement Routines offerings is available to help you decide what your school or teachers need to meet student’s needs.

---

*If anyone is interested in any SIM training,  
contact FDLRS 863 531-0444 X234*

# Three New PDA ESE Online Courses Coming in April

FDLRS Heartland will be offering three more online courses through the PDA ESE modules beginning in April. Courses offered will be:

## Foundations of Exceptional Student Education:

**T**his module has been designed to help you build your understanding of the different types of programs and services that make up exceptional student education (ESE) and the history of how they came to exist. From topics such as founding pioneers and landmark legislation to defining categories and determining ESE services and supports, the learning activities and assessment tasks will allow you to build a solid understanding of the Foundation of ESE.

The following ESE K-12 Certification skills will be covered throughout this module.

- Identify state and federal legislation and case law that have affected the education of students with disabilities.
- Identify appropriate practices based on legal and ethical standards (e.g., due process, procedural safeguards, confidentiality, access to general education, least restrictive environment, transition planning, and free appropriate public education).

- Identify the required components of Individual Educational Plans, Family Support Plans, and Individual Transition Plans.

- Identify the classification systems and eligibility criteria under the current Individuals with Disabilities Education Act (IDEA).

- Compare the development and characteristics (e.g., language, cognitive/academic, social/emotional, and physical/motor) of children with disabilities to typical development and characteristics.

- Recognize the roles and responsibilities of Individual Education Plan (IEP) and child study team members.

- Identify models of support for providing assistance in general education curricula.

- Identify the purposes and functions of professional and advocacy organizations relevant to educating students with disabilities.

In order to demonstrate competency in the above skill areas, you will be required to complete a number of assessment tasks to include in your electronic portfolio. They are related to the information presented in the learning activities throughout each unit.

## Language Development and Communication:

**T**he module was designed to provide an understanding of the of the evaluation of speech/language services in the public schools, the connection between language and literacy, the stages of language development, and assistive communication. It also outlines the impact that communication and language deficits have on a student's academic performance and provides suggested strategies and techniques for enhancing student achievement.

The following ESE K-12 Certification skills will be covered throughout this module:

- Identify the sequence of expressive and receptive language development and the components of language structure.

- Identify communication deficits and select appropriate interventions.

- Select appropriate assistive technology and alternative communication

systems to facilitate communication.

- Select strategies for integrating communication instruction into educational settings.

In order to demonstrate competency in the above skills area, you will be required to complete a number of assessments tasks to include in your electronic portfolio. They are related to the information presented in the learning activities throughout each unit.

## **Positive Behavior Support:**

**T**his module will provide knowledge of how to assess, design, and implement positive behavior supports. The content for the Positive Behavior Support module of the PDA-ESE program was developed in conjunction with the University of South Florida's Positive Behavior Support

(PBS) Project. The module reflects content from a variety of PBS publications and training efforts sponsored by the Florida Department of Education. Completion of this module should not be construed to imply the same level of expertise as one would gain from participation in a dedicated training session conducted in a concentrated PBS face-to-face training format over the course of a number of days. The Florida Department of Education sponsors the Positive Behavior Support Project at the University of South Florida. Information on available in-service training for individuals and entire faculties are available by visiting the PBS Project at their web site <http://flpbs.fmhi.usf.edu> or contacting the PBS Project at 813-974-6440.

The following ESE K-12 Certification skills will be covered:

- Analyze the legal and ethical issues pertaining to positive behavior management

strategies and disciplinary actions.

- Identify data collection strategies to assess student behavior.

- Analyze individual and group data to select and evaluate proactive interventions that foster appropriate behavior.

- Identify and interpret the essential elements of a functional behavior assessment and a behavior intervention plan.

- Recognize the various concepts and models of positive behavior management.

In order to demonstrate competence in the above skill areas, you will be asked to complete a number of assessment tasks to include in your electronic portfolio. The tasks are related to the information presented in the learning activities throughout this unit.

**If interested in participating in any of these online courses, please complete the attached registration forms and return no later than March 23, 2010.**

## Registration Form

### PDA/ESE Online Modules

Sponsored by FDLRS Heartland – Lake Placid, Florida

Class Location: Heartland Educational Consortium – Training Room A  
US Hwy 27 N Lake Placid, Florida

Registration Deadline March 23, 2010

Time: 4:00 PM – 6:00 PM

Module begins on First Mandatory Face-To-Face Meeting on April 14, 2010, 4-6 PM.  
(Additional face-to-face meetings will be scheduled at this meeting.)

Please print name: \_\_\_\_\_ Date: \_\_\_\_\_

School: \_\_\_\_\_ County \_\_\_\_\_ ESE  Yes  No

Teaching Assignment: \_\_\_\_\_

Home Address: \_\_\_\_\_

Primary e-mail \_\_\_\_\_  Alternate e-mail \_\_\_\_\_

Home phone: \_\_\_\_\_  Work phone: \_\_\_\_\_

Email addresses and phone numbers are requested so the course instructor can contact you, if needed.  
Please check (✓) in the box above, the best way to contact you.

Please select ONE module you plan to complete:

Foundations of Exceptional Student Education – Apr. 14-June 1

Language Development and Communication - Apr. 14 – June 1

Positive Behavior Support – Apr 14 – June 1

I will use this module to the following: (Please check only one)

To renew my teaching certificate

To satisfy the in-service hours required as I am teaching out of field

To target an area on my Professional Development Plan

**I agree to attend all sessions of the course and to complete all required assignments in a timely manner.**

Signature: \_\_\_\_\_

Date: \_\_\_\_\_

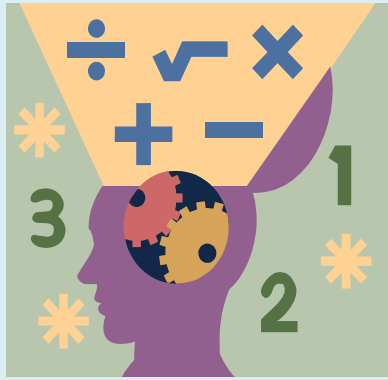
**Fax to FDLRS Heartland at 863-531-0425**

The Florida Diagnostic & Learning Resource System is funded by the State of Florida, Department of Education, Division of Public Schools and Community Education, Bureau of Exceptional Student Education and Student Services, through Federal assistance under the Individuals with Disabilities Education Act (IDEA), Part B, IDEA, Part B Preschool and State General Revenue Funds.

## Recognition And Response



[www.RecognitionandResponse.org](http://www.RecognitionandResponse.org) Provided by the National Center for Learning Disabilities (NCLD) this site provides free information and resources to educators and early childhood practitioners about Recognition & Response system. The system is designed to help teachers and parents respond to signs of learning difficulty in young children as early as possible, (beginning at 3-4 years of age), before they experience failure in school and are referred for formal evaluative services through exceptional student education. Visit this site as there is a lot of information for teachers and parents.



---

## *Rtl and Mathematics*

---

**T**eachers, are you looking for awesome resources to help with Rtl and Mathematics in your classrooms? Want examples of tried and true things that work? Want a breakdown of math benchmarks and their resourced information? Then you need to go to the Rtl Teaching Learning Connections website from the University of Central Florida. There are so many things there just waiting for you to try.... Products from primary and secondary edible math booklets and CDs, to Cool Tools in Mathematics: Classroom Assessments for Teachers; Math Connections: Learning Gains and Instructional Decision –making in the Math Classroom; Cognitive and Metacognitive Strategies book; Mathematics Concepts and Skills Checklists by Grade Level (grades K-8).

**T**he Rtl Teaching Learning Connections website operates on the premise that if we teach today the way we were taught yesterday we aren't preparing students for today or tomorrow. There are examples of all kinds of uses of effective technology covering whole class instruction to individual students.

**V**isit the website today and start enhancing your “bag of classroom” techniques to assist students struggling in math. The website is: <http://rtitlc.ucf.edu>. You can also call them at 386.274.0175 or 407.823.3286.

## **FDLRS Services**

### **Resource Collection** **Available for Checkout to You!**



FDLRS has a resource collection that you can access for use in your classrooms. Check the FDLRS website at

[www.efdlrs.net/heartland](http://www.efdlrs.net/heartland)

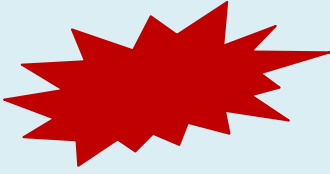
Complete an online check out sheet and fax it to FDLRS at 1-863-541-0425

## **Child Find**

One of FDLRS four functions is to provide screening and, if needed, more evaluation to find out if early intervention would help a child.

If you know a pre-school aged child with significant development problems, please call: 1-800-316-7057 or 1-863-531-0444 ext. 228.





## **NEWS FLASH**

**FDLRS** Heartland has added a new face! Julia Murchison is our new Child Find/Parent Specialist beginning in January. Julia hails from Okeechobee where she was employed as a reading teacher at Okeechobee High School. Julia has a degree in Elementary Education as well as ESE certification and Reading Endorsement credentials.



Julia is the new Child Find Specialist for Hendry and Glades County, replacing Byron Smith. Byron is going to full time Technology for FDLRS. From hence forth all referrals for preschool aged children in Hendry and Glades County will go to Julia. She can be reached at the Lake Placid office at 1-863-531-044 x 230.

Julia is also the new FDLRS Parent Specialist for Highlands County. She works with the school and district ESE parent liaison to assist with parents of special needs students.

If you have topics or training you would like to have presented to parents in your schools contact Julia at FDLRS office to discuss your needs.

## Parent's Conference in Arcadia



**P**arents in Arcadia enjoyed a multi-day training by FDLRS Heartland on Passport To Success. The training began in Nov. 2009 and concluded in Feb. 2010. Parents learned strategies for helping their children be successful in school.



**Happy Valentine's Day!**



## **DON'T FORGET**

**FDLRS Heartland wants to remind everyone to be sure and complete the needs assessment survey on our website. This is the best way to let us know what your needs are.**

**Go to the homepage on [www.efdlrs.net/heartland](http://www.efdlrs.net/heartland) and click on the link entitled "FDLRS Needs Assessment Survey". You can also find the survey by clicking on the link that says "What's New At FDLRS Heartland". Either link will take you to the short questionnaire and help us to help you.**

*The Florida Diagnostic & Learning Resource System is funded by the State of Florida, Department of Education, Division of Public Schools and Community Education, Bureau of Exceptional Student Education and Student Services, through Federal assistance under the Individuals with Disabilities Education Act (IDEA), Part B, IDEA, Part B Preschool and State General Revenue Funds.*